



RENTAL CONNECTION

SPECIAL EVENT RENTALS & SERVICES





RENTAL CONNECTION

A Rental Connection is a premiere event rental company specializing beautiful weddings, bat/bar mitzvahs to birthday celebrations, anniversaries, innovative corporate events, benefit galas, and parties for any occasion. Our company's greatest attribute is our commitment to our client's vision — with a client list that includes event planners, locations, caterers, private hosts, corporations, and nonprofit organizations.

A Rental Connection believes that planning a magnificent event should be fun and stress-free, so we explore every creative solution for our clients. We are determined to not only meet your expectations, but exceed your expectations every time. A Rental Connection wants you to feel a sense of pride and satisfaction knowing that we are invested in making your event a huge success. We invite you to meet our talented team of professionals. Call us TODAY for a complimentary consultation.



SHOWROOM

5397 N. Commerce Ave
Moorpark CA 93021

TOLL-FREE

800-392-6326

SALES DEPARTMENT

805-876-0020

FAX

805-876-0196

AFTER HOURS EVENT EMERGENCIES

818-585-3144

WEBSITE

www.arentalconnection.com

EMAIL

info@arentalconnection.com

FACEBOOK

A Rental Connection

INSTAGRAM

@arentalconnection



TABLE OF CONTENTS

About A Rental Connection	2	Lighting	34-35
Chairs		Bars	36-37
• Chiavari	4	Lounge Furniture	38-40
• Wooden Folding	5	Floor Plan Design	41
• Specialty	6-9	Dance Floors	42-43
Specialty Tables	10-11	Flooring & Staging	44-45
Linens	12-13	Catering	
Tuscana Collection	14-15	• BBQs, Grills & More	46
Arches and Arbors	16-17	• Kitchen Appliances	47
Dinnerware		• Catering Equipment	48-49
• Dinner Plates	18-20	Miscellaneous	50
• Charger Plates	21	Outdoor	51
• Flatware	22-23	Heating & Cooling	52
• Glassware	24-27	Walls	53
• Buffet & Serving	28-29		
Tenting	30-31		
Draping & Swagging	32-33		



PHOTO CREDITS: @angelicamariemphoto, @jesworkman, @beccarillo, @genekangphoto, @victoriagoldphotography, @dukeimages, @jennyquicksall, @ashleighanderik, @lucasrossipphoto, and @alexwphotography

CHIAVARI CHAIRS

A



B



C



D



E



F



G



Chair Colors

- A. Natural
- B. Mahogany
- C. White
- D. Fruitwood
- E. Black
- F. Gold
- G. Silver

WOODEN FOLDING CHAIRS



FRUITWOOD



BLACK



NATURAL



WHITE



SPECIALTY CHAIRS



GHOST CHAIRS



BENTWOOD



SPECIALTY CHAIRS



VINEYARD CHAIR



**KING LOUIE XIV
CHAIR**



SPECIALTY CHAIRS

WOOD BAR STOOL



NATURAL



BLACK

TALL DIRECTOR'S CHAIR



SAMSONITE FOLDING CHAIR



TUSCANA BAR STOOL



VINEYARD BAR STOOL

SPECIALTY CHAIRS



PARK BENCH



BOOSTER SEAT



WOODEN HI-CHAIR

WHITE KID'S CHAIR



DOES A RENTAL CONNECTION OFFER DELIVERY?

A Rental Connection offers a solid delivery service. Fees are based on timing, location, and difficulty of installation. Delivery services requires a minimum rental order based on location.

Delivery includes the set up of heavy equipment (canopies, lighting, dance floor, tables and chairs) at no additional charge. Linens, china, flatware, and glassware will be left stacked close to point of use.

For a quote, please call our Customer Service personnel toll-free at **800-392-6326** or locally at **818-883-7368**.

You may also fill out an online form at www.ARentalConnection.com.

HOW MUCH SPACE IS NEEDED FOR CEREMONY OR AUDITORIUM SEATING?

It is safe to say that row seating will require 7-10 sq. ft. per person.

SPECIALTY TABLES



**HI GLOSS WHITE
TABLE**



**HI GLOSS WHITE
TABLE**



**TUSCANA
TABLE**

SPECIALTY TABLES



MAYFLOWER SWEETHEART TABLE

Also Available:

ROUND TABLE

Available sizes:
24", 30", 36", 48", 54",
60", 66" & 72"

RECTANGULAR BANQUET

Available sizes:
4' X 30", 6' X 18", 6' X 30",
8' X 18", 8' X 30" & 8' X 40"

HALF ROUND TABLES

SERPENTINE TABLES

QUARTER ROUND TABLES

For specific table dimensions, required space,
suggested linen and other information,
please contact an Event Consultant at
818-883-RENT.

You may also visit our website
for table diagrams at
www.ArentalConnection.com



**MAYFLOWER
TABLE**



**MAYFLOWER
ROUND TABLE**

LINENS

AVAILABLE
IN
COLORS
AND
PATTERNS.



Velvet



Nova Solid



Iridescent Crush



Poly-Cotton



Overlay



Satin



Satin Stripe



Rose Pattern



Linea



Linati



LINENS



TUSCANA COLLECTION



A SIGNATURE LINE BY A RENTAL CONNECTION

Simple in design, but sturdy in construction — the Tuscana Collection captures the beauty and essence of Italy's southern coastline.



TUSCANA COLLECTION



The collection includes:

Dining tables: 4' x 4' and 4' x 8'

Tables: 2' x 4' and 2' x 8'

Cocktail tables: 24" x 24"

Bars

Bar Stools

Benches: * 2' x 4'

and 12" x 48"

Cabanas: 8' x 12', available in many sizes

**Benches are padded.*



ARCHES AND ARBORS



CIRCLE ARCH



**HORSESHOE
ARCH**

ARCHES AND ARBORS



TUSCANA ARBOR

WHITE ARBOR



HEXAGON ARCH



DINNER PLATES



WHITE COUPE CHINA

10" Dinner, 7" Salad, (6" B&B Also available)



WHITE W/ GOLD RIM

10" dinner plate, 8" Salad Plate, (6" B&B also Available)



WHITE W/ PLATINUM

10" Dinner plate, 9" Lunch plate (7" Salad/Cake plate, 6" B&B plate, 12" Charger plate, Soup bowl, Coffee Cup and Saucer, Creamer and Sugar also available)



ROYAL WHITE CHINA

10" Dinner plate, 7" Salad plate, (12" Charger plate, 9" Lunch plate, 6" B&B plate, Coffee Cup and Saucer, Demitasse Cup and Saucer, Creamer and Sugar, Soup bowl Also available)

DINNER PLATES



IVORY W/ GOLD BAND CHINA

10" Dinner plate, 7" Salad/Cake plate, (12" Charger plate, 9" Lunch plate, 6" B&B plate, Soup bowl, Coffee Cup and Saucer, Creamer and Sugar also available)



CLASSIC IVORY CHINA

10" Dinner plate, 7" Salad plate, (6" B&B plate, 9" Lunch plate Also available)



Sienna Lace Dinner



VILLA D'ESTE

10.5" Dinner Plate, 8" Salad (12" Charger, 6" B&B Also available)

DINNER PLATES



HEIRLOOM MATTE GREY

10.75" Dinner Plate, 8" Salad Plate (6" B&B Also available)



HEIRLOOM MATTE WHITE

10.75" Dinner Plate, 8" Salad Plate, (6" B&B Also Available)



VANESSA PLATINUM

10" Dinner plate, 9" Lunch plate, (7" Salad/cake plates, 6" B&B plates Also available)



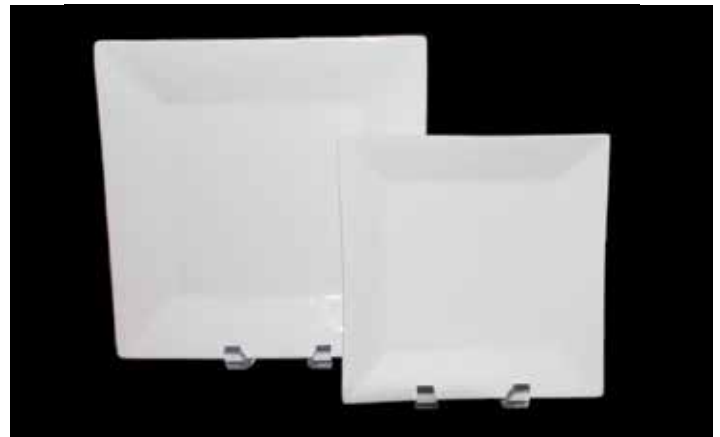
HEIRLOOM MATTE BLACK

10.75" Dinner Plate, 8" Salad Plate 6" B&B



WHITE HOUSE CHINA

10" Dinner plate, 9" Lunch plate, (12" Charger plate, 7" Salad/cake plate, 6" B&B plates, Coffee Cup and Saucer, Also available)



WHITE SQUARE CHINA

10" Dinner plate, 7.5" Salad plate, (6" B&B plate, 3.75" plate, 10" Bowl, 6" Bowl, Coffee Cup and Saucer, 5"x14" Platter 16" Platter Also available)

CHARGER PLATES



**12" HAMMERED
COPPER CHARGER**



**12" GOLD
CHARGER**



**12" SILVER
CHARGER**



**12" BLACK
CHARGER**



**12" STAINLESS
CHARGER**



**12" FRUITWOOD
CHARGER**



**SILVER BEADED
CHARGER**



**GOLD BEADED
CHARGER**



**CLEAR BEADED
CHARGER**



**SILVER BAND
CHARGER**



**GOLD BAND
CHARGER**



**BELLA VISTA MARBLE
CHARGER**



**12" WICKER
CHARGER**



**GOLD BURST
CHARGER**



**SILVER BURST
CHARGER**

FLATWARE



MARK II

Salad fork, Dinner fork, Dinner knife, Table spoon, Tea Spoon (Demi Spoon, Butter spreader Also available)



DECO

Salad Fork, Dinner Fork, Dinner Knife, Table Spoon, Tea Spoon (Butter Knife & Bouillon spoon also available)



FALMOUTH

Salad/Cake fork, Dinner fork, Dinner knife, Table spoon, Tea spoon (Butter Spreader also available)



SILVER BEADS

Salad Fork Dinner Fork, Dinner Knife, Butter knife, Tea Spoon (Bouillon spoon Also Available)



BRUSHED STAINLESS

Salad fork, Dinner fork, Dinner knife, Dessert/Soup spoon, Tea Spoon



LUCCA FACETED STAINLESS

Salad fork, Dinner fork, Dinner knife, Dessert spoon, Tea/Coffee Spoon, (Bouillon spoon, Butter knife Also available)

FLATWARE



BLACK AND GOLD

Salad Fork, Dinner Fork, Dinner Knife, Tea Spoon, (Butter Knife also available)



MATTE GOLD

Salad fork, Dinner Fork, Dinner Knife, Dessert/Soup Spoon, Tea Spoon (Butter spreader also available)



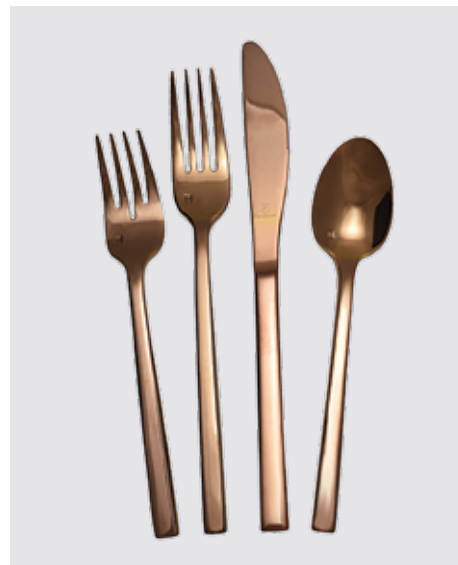
SAVOY TITANIUM

Salad Fork, Dinner Fork, Dinner Knife, Tea /Coffee Spoon (Butter spreader also available)



DRAGON FLY

Salad Fork, Dinner Fork, Dinner Knife, Soup Spoon, Tea/Coffee Spoon (Butter spreader also available)



ROSE GOLD

Dinner knife, Dinner fork, Salad fork, Teaspoon (Butter spreader Also available)



STEAK KNIVES

Stainless with Black Handle
or
Stainless with Wood handle

GLASSWARE



PURE

15.5 oz Water Goblet, 13.5 oz Wine Glass, 18 oz Wine Glass, 7 oz Champagne Flute



CLASSICO

13oz Water, 13oz Wine, 6oz Champagne Flute



ANGELIQUE

8.5 oz Wine 10.5oz goblet 5.75oz Flute



FORTE

1.5oz Water, 13 oz White Wine , 18 oz Red Wine, 7 oz Flute

GLASSWARE



GOLD RIM

16 oz Water Goblet, 8 oz Wine Glass, 6.5 oz Flute Glass



LIBBY GLASSWARE

8oz Wine, 10.5oz wine, 11oz Water Goblet, 6oz Flute



STEMLESS

11oz Wine 17oz Wine 6oz Flute



GLASS COFFEE MUG



11 OZ PILSNER GLASS

GLASSWARE



LIBBEY BARWARE

1 oz Shot, 2oz Shot, 1 oz Shot Glass, 1 oz. Cordial, 2 oz Sherry, 5.5 Coupe Champagne Glass, 5.5 oz Tulip Glass



GLASS BEVERAGE SERVERS

Water Picher, 1L Wine Carafe, and 1qt Pour Bottle w/cap



16 OZ COPPER MUG

Also known as artisan Moscow Mule

GLASSWARE



DEBUTANTE GOBLET

Clear Goblet,
Amber Goblet,
Pink Goblet, Purple
Goblet, Teal Goblet,
Smoke Goblet



MARTINI

8oz Cosmo, 4 oz Martini, 8oz, Martini, 12oz Blue Martini



HI BALL

13oz Old Fashion, 9oz Hi Ball



COLORED GLASSWARE

Amber Water Goblet, Green Water Goblet, Smoked Water Goblet



ARIANA

16oz wine Black, 16oz wine white

BUFFET & SERVING



8QT STAINLESS CHAFER



8QT SILVER CHAFER



8QT DELUXE CHAFER



CARVING LAMP



**7.5-QT. ROUND
AND 8-QT OBLONG
ROLL TOP CHAFERS**

COFFEE SERVICE



50-Cup Stainless Urn
Also available:
100-Cup Silver
Coffee Urn



**100-Cup
Coffee Maker**
Also Available:
55-Cup Coffee Maker



**Chrome
coffee pourer**



**Hammered
coffee pourer**

BUFFET & SERVING



Royal White Platters



Rectangular Silver Trays
Available in 12"x 20"
and 18"x 24"



Polished Aluminum Tray
Shapes in Oblong,
Oval and with Handles



15" Round
Silver Tray



Cake Serving
Utensils



Serving Utensils
Stainless Steel and Silver



Tongs
Ice tongs, Medium tongs,
Scissor tongs & Utility



Carving
Utensils



Hammered Punch Bowl



Glass Sugar
and Creamer
Also Available in
Stainless



Desserts
Soda and Sundae



Supreme
17-oz Bowl, 5-oz Bowl Liner



Silver Water
Pitcher and Gravy Boat



White Cake Stand



22" Silver Round Cake Stand
Also Available in Gold



Crystal Cake Stand

TENTING



A Rental Connection is a premiere event rental company, with over 25 years of reputable experience in tenting ranging from small canopies to Marquee to clear-span or structure tents. We have tent solutions for all size events, from small gatherings of 10 to large events with thousands of people in attendance. A Rental Connection can handle your tenting needs for weddings, bat/bar mitzvahs to birthday celebrations, anniversaries, corporate events and benefit galas.

Our company's greatest attribute is our commitment to our client's vision and making sure we adhere to the strictest safety laws in the tenting industry. We also obtain safety permits as required by law. Our clients come to us for immaculate and beautiful tents as well as our competitive pricing from event planners, locations, caterers, couples, private hosts, corporations, and nonprofit organizations.

We pride ourselves on providing clients with highest standard of customer service and we want you relax knowing that A Rental Connection is your partner in making sure that your event is a huge success.

Please meet our talented team of professionals. Call us TODAY at **818-883-RENT** (7368) for a complimentary consultation. We look forward to speaking with you! You may also visit us online at: www.arentalcon.com.



TENTING



WHAT SIZE TENTS DO YOU RENT? PERMITTING

A Rental Connection offers a wide range of tent styles and sizes, ranging from 6'x6' to 100'x200'. At no additional cost, A Rental Connection Consultant can meet you at your home or event location to help determine what you need.

Permits are required by law for most tents exceeding a certain size. The requirements vary depending on what city you are in. A Rental Connection offers a service to handle all required permitting.



DRAPING & SWAGGING



A Rental Connection can bring life to your event space. Whether it is a tent, warehouse, or outdoor area—fabric draping and swagging can transform your area into a visual fantasy.



DRAPING & SWAGGING



LIGHTING



At **A Rental Connection**, we pride ourselves on providing our clients with cutting-edge event lighting services. It's our top priority to ensure that our client's vision is accurately realized. We'll help you decide whether your event requires general or dramatic special event lighting, including color wash, basic or custom Gobos, or up-lighting. From crystal chandeliers to stage lights to outdoor lanterns and market lights, A Rental Connection's lighting service and products are available for any size event.

From event lighting to climate control to audio/visual requirements, A Rental Connection's inventory of generators and power accessories can support the electrical need of your event, for any duration of time.

For a free consultation, please call us tollfree at **800-392-6326** or locally at 805-876-0020 You may also visit us online at **www.arentalconnection.com**.



LIGHTING



BARS



Rustic Bar



Whether your event is indoors or outdoors, A Rental Connection offers a wide array of bar and lounge furniture. Our diverse collection of bars, sofa lounges, pillows and covers will complement the theme of any event. For bar stools, please refer to our Chairs section.



Potting Bench Bar

BARS



White Hi Gloss Bar



Ladder Bar



Skirted Bar



White Bar



Translucent Bar



Black Bar



Tuscan bar



Wine Barrel Bar

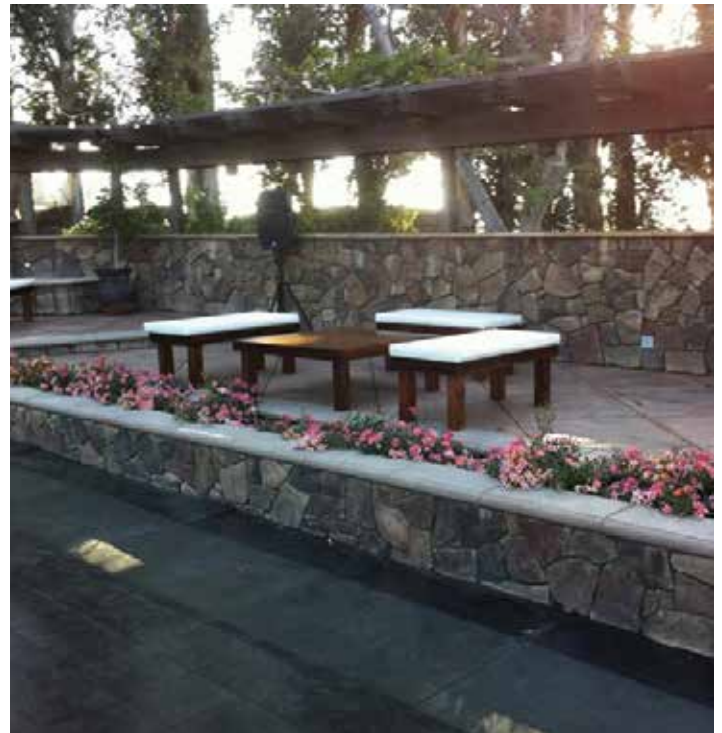
LOUNGE FURNITURE



LOUNGE FURNITURE



LOUNGE FURNITURE



FLOOR PLAN DESIGN

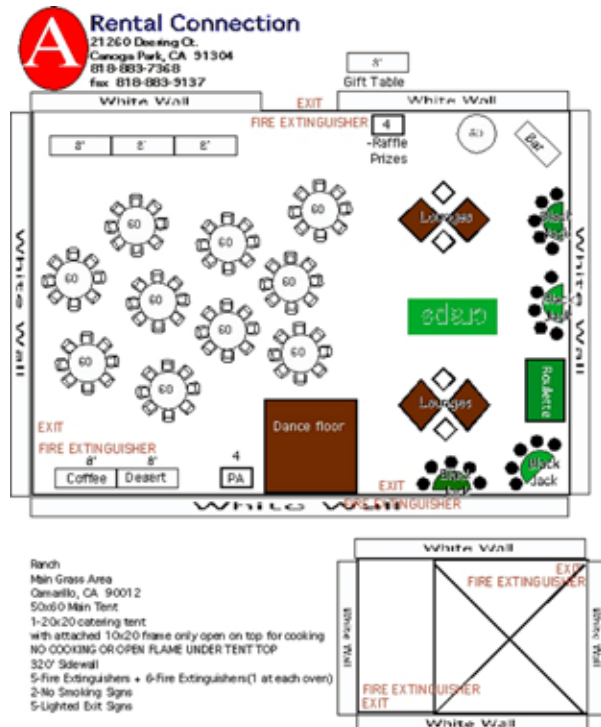
Whether your special event takes place at a private residence or a public facility, we can create a venue's layout with a Floor Plan Design. **A Rental Connection** provides diagrams drawn to scale, accurately outlining your event's space. Diagrams include the placement of tables, chairs, dance floors, lighting, and all other features of your event. Our Floor Plan Designs are fully customizable and will adhere to any city permit/code requirement.

For a free consultation, please call us toll-free at **800-392-6326**, locally at **818-883-RENT** (7368) or **805-876-0020**



DO YOU A NEED AN EVENT CHECKLIST?

Visit **www.arentalconnection.com** and download a free Event Checklist.



DANCE FLOORS



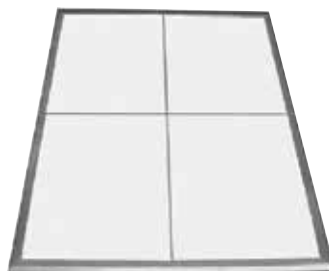
A Rental Connection offers a fine selection of dance floors for your next special event. Many sizes are available to fit any party size.

WHAT SIZE DANCE FLOOR DO I NEED?

Count on 9 sq. ft. per couple dancing.



Black



White



Windsor Oak



Black & White
Checkered

DANCE FLOORS



Windsor Oak Dance Floor



Rustic Wood Floor



Monogrammed Dance Floor

FLOORING & STAGING



A Rental Connection offers subflooring and staging installation for indoor and outdoor events. Working closely with planners and designers, A Rental Connection can also custom build pool decks, platforms or other structures.

Flooring options include dance floors, Astroturf and carpet available in any Pantone color. Please call us at **818-883-7368** for a complimentary consultation.



FLOORING & STAGING



BBQ GRILLS & MORE

A Rental Connection provides all the necessary products to make your next event a success. We offer a diverse range of equipment for caterers and wait staff. Please contact us for a complete list of catering equipment.

How much space is required for a cocktail party?

A cocktail party usually requires 10-12 sq. ft. per person.

How much space is required for a sit-down dinner?

A served meal may require less space, but figure 18-20 sq. ft. per person.

How many glasses do I need per guest?

A cocktail party usually requires 3 glasses per person.



2'x5' Charcoal BBQ Grill



2'x5' Propane BBQ Grill with Tank
also available 2' x 4'



Deep Fryer



Pizza Oven



Freestanding Pancake Grill



Cambro Hot Box
available in half size

KITCHEN APPLIANCES

What are your hours of delivery?

Normal delivery hours are 7:30 am to 5 pm, Monday through Saturday. Deliveries and pick-ups can be scheduled 24 hours a day at additional cost.

What if I want to pick up the equipment (Will Call)?

A Rental Connection's Will Call hours are Monday through Friday, 8:30 am to 4:30 pm, and Saturday from 8 am to 12 pm.



Convection Oven



6-Burner Oven



4-Burner Tabletop Stove



2-Burner Tabletop Stove



Blender



Handwashing Sink



Transit Rack



Baker's Rack



Electric Transit Cabinet
also available
in half size



3-Compartment Sink

CATERING EQUIPMENT

How far in advance should I place my order?

It is never too early to place your order and reserve your rental needs. A Rental Connection strongly recommends you place your order as soon as possible to guarantee availability. Product counts can be adjusted as your event date approaches.

REFRIGERATORS



Double-Door Refrigerator



Single-Door Refrigerator



Single-Door Freezer



Fridge/Freezer Combo



Sauté Pan



Revere Bowls



Ramekins



Sauce Pot



Polished Aluminum Bowl



Mixing Bowls

CATERING EQUIPMENT

What if there is an issue with the equipment rented, and it is after business hours?

A Rental Connection offers clients with existing orders a 24 hour/7 days a week on-call service. If a problem arises, please call **818-585-3144**.

Silver Bread Baskets



Wicker Bread Baskets



Black Bread Baskets



Table Numbers and Stands



Coffee Swirl Pot



Plate Covers



Metal Waiter's Tray Stand



Wooden Waiter's Tray Stand



Assorted Waiter's Trays



Bus Tubs



32-gallon Trash Cans
slim trash cans also available



Smoker's Urn
also available in 3 different styles



5-gallon & 10-gallon
Igloo Thermos



Lottery Drum

MISCELLANEOUS

A Rental Connection has a wide array of accessories to complete your special event. For a complete list of event and crowd control products, please contact us at **800-392-6326**.



Chrome Shelves



Gold Shelves



Rustic Easel



Aluminum and Chrome Easels



Guestbook Stand



Garment Rack with Hangers

LAWN GAMES



Giant Jenga



Giant Connect 4



Corn Hole

OUTDOOR

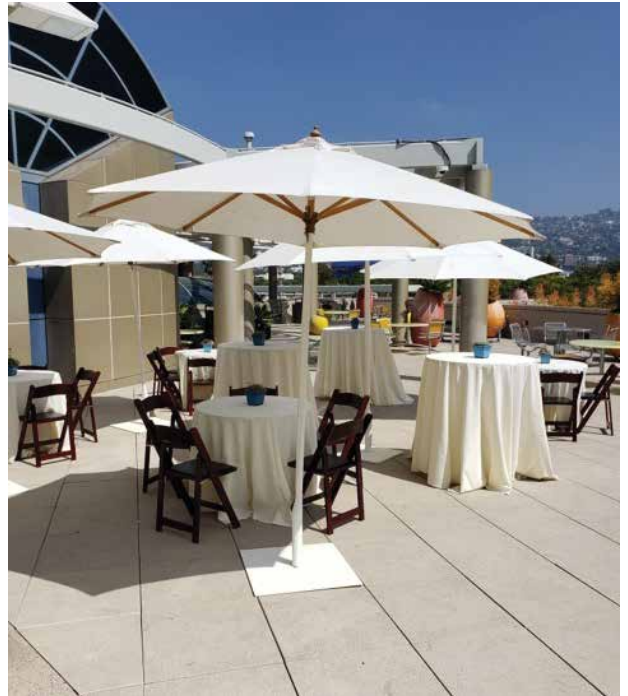
UMBRELLAS



Hunter Green
Market Umbrella



White
Market Umbrella



CROWD CONTROL



Velvet Ropes



Retractable
Stanchion



Aisle
Standards



Bicycle Barricade



White Picket Fence

GREENERY AVAILABLE

- | | |
|-------------------|---------------|
| Live Plants | Hedges |
| Artificial Plants | Topiary |
| Ficus | Boxwood |
| Date Palm Trees | Bamboo |
| Areca Palm | Moss |
| Queen Palm | Fresh Flowers |
| King Palm | Silk Flowers |
| Lattice | Saved |
| Sod | |



HEATING & COOLING



A Rental Connection has a wide inventory of heating and cooling products for your next event. We have what you need for climate control from portable heaters to keep you warm in the winter, to fans and air conditioners to keep you cool in the summer.

How many hours will a solar flow heater run?

A heater will cover a 6'-10' diameter for approximately 6-8 hours at full rate.



Lava Heater



Solar Flo Heater



Freestanding Fan



Forced Air Heater

WALLS













RENTAL CONNECTION

SPECIAL EVENT RENTALS & SERVICES



SHOWROOM

5397 N. Commerce Ave
Moorpark CA 93021

TOLL-FREE

800-392-6326

SALES DEPARTMENT

805-876-0020

FAX

805-876-0196

**AFTER HOURS EVENT
EMERGENCIES**

818-585-3144

EMAIL

info@arentalconnection.com



www.arentalconnection.com